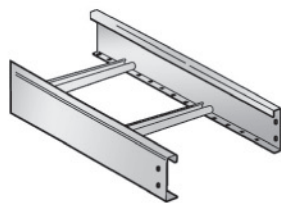
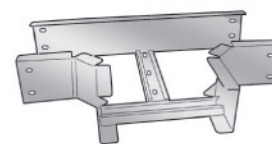


Canale a traversino
Cable ladder



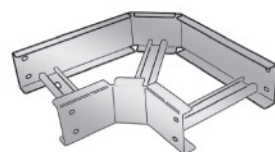
Codice Code	H mm	B mm	Prezzo pz./Price pcs.			
			Z	C	I	V
SLELT10*3	80	100	16,76	19,90	-	-
SLELT15*3	80	150	18,03	21,93	-	-
SLELT20*3	80	200	18,03	21,93	-	-
SLELT30*3	80	300	19,31	23,93	-	-
SLELT40*3	80	400	23,08	29,66	-	-
SLELT50*3	80	500	24,54	31,93	-	-
SLELT60*3	80	600	26,00	34,21	-	-
SLELT101*3	100	100	18,47	22,39	-	-
SLELT151*3	100	150	19,75	24,40	-	-
SLELT201*3	100	200	19,75	24,40	-	-
SLELT301*3	100	300	21,03	26,42	-	-
SLELT401*3	100	400	25,18	32,66	-	-
SLELT501*3	100	500	26,64	34,92	-	-
SLELT601*3	100	600	27,26	37,20	-	-

Derivazione piana a T a traversino
Flat T



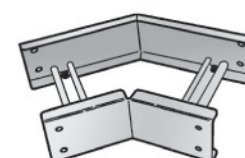
Codice Code	H mm	B mm	Prezzo pz./Price pcs.			
			Z	C	I	V
SLDPT10TR*	80	100	29,87	35,29	-	-
SLDPT15TR*	80	150	32,58	38,91	-	-
SLDPT20TR*	80	200	32,58	38,91	-	-
SLDPT30TR*	80	300	35,29	42,53	-	-
SLDPT40TR*	80	400	38,91	46,16	-	-
SLDPT50TR*	80	500	42,53	49,78	-	-
SLDPT60TR*	80	600	46,16	55,20	-	-
SLDPT101TR*	100	100	32,58	38,00	-	-
SLDPT151TR*	100	150	35,29	41,63	-	-
SLDPT201TR*	100	200	35,29	41,63	-	-
SLDPT301TR*	100	300	38,00	45,25	-	-
SLDPT401TR*	100	400	41,63	48,87	-	-
SLDPT501TR*	100	500	45,25	53,39	-	-
SLDPT601TR*	100	600	48,87	57,00	-	-

Curva piana a 90°
90° flat bend



Codice Code	H mm	B mm	Prezzo pz./Price pcs.			
			Z	C	I	V
SLCRP10TR*9	80	150	19,90	22,62	-	-
SLCRP15TR*9	80	150	21,71	25,34	-	-
SLCRP20TR*9	80	200	21,71	25,34	-	-
SLCRP30TR*9	80	300	23,53	28,04	-	-
SLCRP40TR*9	80	400	26,24	30,77	-	-
SLCRP50TR*9	80	500	28,96	33,49	-	-
SLCRP60TR*9	80	600	30,77	36,20	-	-
SLCRP101TR*9	100	100	21,71	24,42	-	-
SLCRP151TR*9	100	150	23,53	29,87	-	-
SLCRP201TR*9	100	200	23,53	29,87	-	-
SLCRP301TR*9	100	300	25,34	32,58	-	-
SLCRP401TR*9	100	400	28,04	35,29	-	-
SLCRP501TR*9	100	500	30,77	38,00	-	-
SLCRP601TR*9	100	600	33,49	57,00	-	-

Curva piana a 45°
45° flat bend



Codice Code	H mm	B mm	Prezzo pz./Price pcs.			
			Z	C	I	V
SLCRP10TR*4	80	100	14,93	16,97	-	-
SLCRP15TR*4	80	150	16,29	19,00	-	-
SLCRP20TR*4	80	200	16,29	19,00	-	-
SLCRP30TR*4	80	300	17,65	21,03	-	-
SLCRP40TR*4	80	400	19,68	23,08	-	-
SLCRP50TR*4	80	500	21,71	25,12	-	-
SLCRP60TR*4	80	600	23,08	27,15	-	-
SLCRP101TR*4	100	100	16,29	18,33	-	-
SLCRP151TR*4	100	150	17,65	20,37	-	-
SLCRP201TR*4	100	200	17,65	20,37	-	-
SLCRP301TR*4	100	300	21,59	22,39	-	-
SLCRP401TR*4	100	400	21,03	24,42	-	-
SLCRP501TR*4	100	500	23,08	26,47	-	-
SLCRP601TR*4	100	600	25,12	28,51	-	-

Completare il codice sostituendo al simbolo (*) le iniziali indicate di seguito. \ Complete the code by replacing (*) with following letters.

VB BLU \ BLUE
RAL 5015

VG GRIGIO \ GREY
RAL 7035

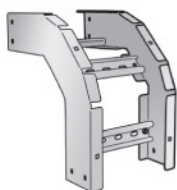
V VERNICIATO GRIGIO SU ORDINAZIONE
PAINTED GREY ON REQUEST
RAL 7032

Z ZINCATI SENDZIMIR
SENDZIMIR GALVANIZED

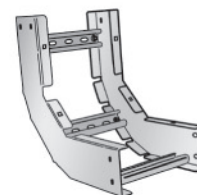
C ZINCATI A CALDO
HOT DIP GALVANIZED

I INOX
STAINLESS STEEL

Curva in discesa 90°
90° down ward bend



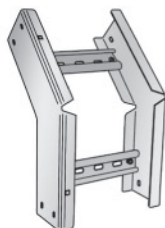
Curva salita 90°
90° up ward bend



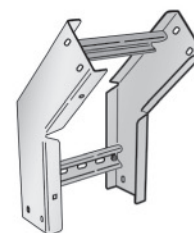
Codice Code	H mm	B mm	Prezzo pz./Price pcs.			
			Z	C	I	V
SLCRD10TR*9	80	100	21,71	24,42	-	-
SLCRD15TR*9	80	150	23,53	26,24	-	-
SLCRD20TR*9	80	200	23,53	26,24	-	-
SLCRD30TR*9	80	300	25,34	28,04	-	-
SLCRD40TR*9	80	400	27,15	29,87	-	-
SLCRD50TR*9	80	500	28,96	31,67	-	-
SLCRD60TR*9	80	600	30,77	33,49	-	-
SLCRD101TR*9	100	100	23,53	26,24	-	-
SLCRD151TR*9	100	150	25,34	28,04	-	-
SLCRD201TR*9	100	200	25,34	28,04	-	-
SLCRD301TR*9	100	300	27,15	29,87	-	-
SLCRD401TR*9	100	400	28,96	31,67	-	-
SLCRD501TR*9	100	500	30,77	33,49	-	-
SLCRD601TR*9	100	600	32,58	35,29	-	-

Codice Code	H mm	B mm	Prezzo pz./Price pcs.			
			Z	C	I	V
SLCRS10TR*9	80	100	21,71	24,42	-	-
SLCRS15TR*9	80	150	23,53	26,24	-	-
SLCRS20TR*9	80	200	23,53	26,24	-	-
SLCRS30TR*9	80	300	25,34	28,04	-	-
SLCRS40TR*9	80	400	27,15	29,87	-	-
SLCRS50TR*9	80	500	28,96	31,67	-	-
SLCRS60TR*9	80	600	30,77	33,49	-	-
SLCRS101TR*9	100	100	23,53	26,24	-	-
SLCRS151TR*9	100	150	25,34	28,04	-	-
SLCRS201TR*9	100	200	25,34	28,04	-	-
SLCRS301TR*9	100	300	27,15	29,87	-	-
SLCRS401TR*9	100	400	28,96	31,67	-	-
SLCRS501TR*9	100	500	30,77	33,49	-	-
SLCRS601TR*9	100	600	32,58	35,29	-	-

Curva in discesa 45°
45° down ward bend



Curva in salita 45°
45° up ward bend



Codice Code	H mm	B mm	Prezzo pz./Price pcs.			
			Z	C	I	V
SLCRD10TR*4	80	100	16,29	18,33	-	-
SLCRD15TR*4	80	150	17,65	19,68	-	-
SLCRD20TR*4	80	200	17,65	19,68	-	-
SLCRD30TR*4	80	300	19,02	21,03	-	-
SLCRD40TR*4	80	400	20,37	22,39	-	-
SLCRD50TR*4	80	500	21,71	23,75	-	-
SLCRD60TR*4	80	600	23,08	25,12	-	-
SLCRD101TR*4	100	100	17,65	19,68	-	-
SLCRD151TR*4	100	150	19,00	21,03	-	-
SLCRD201TR*4	100	200	19,00	21,03	-	-
SLCRD301TR*4	100	300	20,37	22,39	-	-
SLCRD401TR*4	100	400	21,71	23,75	-	-
SLCRD501TR*4	100	500	23,08	25,12	-	-
SLCRD601TR*4	100	600	24,42	26,47	-	-

Codice Code	H mm	B mm	Prezzo pz./Price pcs.			
			Z	C	I	V
SLCRS10TR*4	80	100	16,29	18,33	-	-
SLCRS15TR*4	80	150	17,65	19,68	-	-
SLCRS20TR*4	80	200	17,65	19,68	-	-
SLCRS30TR*4	80	300	19,02	21,03	-	-
SLCRS40TR*4	80	400	20,37	22,39	-	-
SLCRS50TR*4	80	500	21,71	23,75	-	-
SLCRS60TR*4	80	600	23,08	25,12	-	-
SLCRS101TR*4	100	100	17,65	19,68	-	-
SLCRS151TR*4	100	150	19,00	21,03	-	-
SLCRS201TR*4	100	200	19,00	21,03	-	-
SLCRS301TR*4	100	300	20,37	22,39	-	-
SLCRS401TR*4	100	400	21,71	23,75	-	-
SLCRS501TR*4	100	500	23,08	25,12	-	-
SLCRS601TR*4	100	600	24,42	26,47	-	-

Completare il codice sostituendo al simbolo (*) le iniziali indicate di seguito. \ Complete the code by replacing (*) with following letters.

VB BLU \ BLUE
RAL 5015

VG GRIGIO \ GREY
RAL 7035

V VERNICIATO GRIGIO SU ORDINAZIONE
PAINTED GREY ON REQUEST
RAL 7032

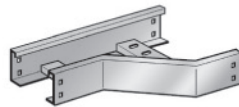
Z ZINCATI SENDZIMIR
SENDZIMIR GALVANIZED

C ZINCATI A CALDO
HOT DIP GALVANIZED

I INOX
STAINLESS STEEL

Riduzione destra a traversino

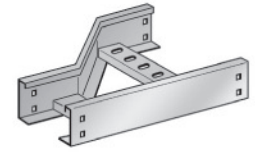
Right reducing cable ladder



Codice Code	H mm	B mm	Prezzo pz./Price pcs.			
			Z	C	I	V
SLRDX15/10TR*	80	150/100	26,13	30,50	-	-
SLRDX20/10TR*	80	200/100	26,13	30,50	-	-
SLRDX20/15TR*	80	200/150	26,13	30,50	-	-
SLRDX30/20TR*	80	300/200	26,97	31,30	-	-
SLRDX30/15TR*	80	300/150	26,97	31,30	-	-
SLRDX30/10TR*	80	300/100	26,97	31,30	-	-
SLRDX40/30TR*	80	400/300	27,87	32,40	-	-
SLRDX40/20TR*	80	400/200	27,87	32,40	-	-
SLRDX50/30TR*	80	500/300	28,86	33,58	-	-
SLRDX50/40TR*	80	500/400	28,86	33,58	-	-
SLRDX60/40TR*	80	600/400	29,87	34,75	-	-
SLRDX60/50TR*	80	600/500	29,87	34,75	-	-
SLRDX15/10TR1*	100	150/100	27,15	31,50	-	-
SLRDX20/10TR1*	100	200/100	27,15	31,50	-	-
SLRDX20/15TR1*	100	200/150	27,15	31,50	-	-
SLRDX30/20TR1*	100	300/200	28,04	32,58	-	-
SLRDX30/15TR1*	100	300/150	28,04	32,58	-	-
SLRDX30/10TR1*	100	300/100	28,04	32,58	-	-
SLRDX40/30TR1*	100	400/300	28,96	33,66	-	-
SLRDX40/20TR1*	100	400/200	28,96	33,66	-	-
SLRDX50/30TR1*	100	500/300	29,95	34,75	-	-
SLRDX50/40TR1*	100	500/400	29,95	34,75	-	-
SLRDX60/40TR1*	100	600/400	30,94	35,93	-	-
SLRDX60/50TR1*	100	600/500	30,94	35,93	-	-

Riduzione sinistra a traversino

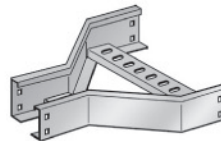
Left reducing cable ladder



Codice Code	H mm	B mm	Prezzo pz./Price pcs.			
			Z	C	I	V
SLRSX15/10TR*	80	150/100	26,13	30,50	-	-
SLRSX20/10TR*	80	200/100	26,13	30,50	-	-
SLRSX20/15TR*	80	200/150	26,13	30,50	-	-
SLRSX30/20TR*	80	300/200	26,97	31,30	-	-
SLRSX30/15TR*	80	300/150	26,97	31,30	-	-
SLRSX30/10TR*	80	300/100	26,97	31,30	-	-
SLRSX40/30TR*	80	400/300	27,87	32,40	-	-
SLRSX40/20TR*	80	400/200	27,87	32,40	-	-
SLRSX50/30TR*	80	500/300	28,86	33,58	-	-
SLRSX50/40TR*	80	500/400	28,86	33,58	-	-
SLRSX60/40TR*	80	600/400	29,87	34,75	-	-
SLRSX60/50TR*	80	600/500	29,87	34,75	-	-
SLRSX15/10TR1*	100	150/100	27,15	31,50	-	-
SLRSX20/10TR1*	100	200/100	27,15	31,50	-	-
SLRSX20/15TR1*	100	200/150	27,15	31,50	-	-
SLRSX30/20TR1*	100	300/200	28,04	32,58	-	-
SLRSX30/15TR1*	100	300/150	28,04	32,58	-	-
SLRSX30/10TR1*	100	300/100	28,04	32,58	-	-
SLRSX40/30TR1*	100	400/300	28,96	33,66	-	-
SLRSX40/20TR1*	100	400/200	28,96	33,66	-	-
SLRSX50/30TR1*	100	500/300	29,95	34,75	-	-
SLRSX50/40TR1*	100	500/400	29,95	34,75	-	-
SLRSX60/40TR1*	100	600/400	30,94	35,93	-	-
SLRSX60/50TR1*	100	600/500	30,94	35,93	-	-

Riduzione centrale a traversino

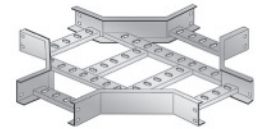
Central reducing cable ladder



Codice Code	H mm	B mm	Prezzo pz./Price pcs.			
			Z	C	I	V
SLRCX15/10TR*	80	150/100	26,13	30,50	-	-
SLRCX20/10TR*	80	200/100	26,13	30,50	-	-
SLRCX20/15TR*	80	200/150	26,13	30,50	-	-
SLRCX30/20TR*	80	300/200	26,97	31,30	-	-
SLRCX30/15TR*	80	300/150	26,97	31,30	-	-
SLRCX30/10TR*	80	300/100	26,97	31,30	-	-
SLRCX40/30TR*	80	400/300	27,87	32,40	-	-
SLRCX40/20TR*	80	400/200	27,87	32,40	-	-
SLRCX50/30TR*	80	500/300	28,86	33,58	-	-
SLRCX50/40TR*	80	500/400	28,86	33,58	-	-
SLRCX60/40TR*	80	600/400	29,87	34,75	-	-
SLRCX60/50TR*	80	600/500	29,87	34,75	-	-
SLRCX15/10TR1*	100	150/100	27,15	31,50	-	-
SLRCX20/10TR1*	100	200/100	27,15	31,50	-	-
SLRCX20/15TR1*	100	200/150	27,15	31,50	-	-
SLRCX30/20TR1*	100	300/200	28,04	32,58	-	-
SLRCX30/15TR1*	100	300/150	28,04	32,58	-	-
SLRCX30/10TR1*	100	300/100	28,04	32,58	-	-
SLRCX40/30TR1*	100	400/300	28,96	33,66	-	-
SLRCX40/20TR1*	100	400/200	28,96	33,66	-	-
SLRCX50/30TR1*	100	500/300	29,95	34,75	-	-
SLRCX50/40TR1*	100	500/400	29,95	34,75	-	-
SLRCX60/40TR1*	100	600/400	30,94	35,93	-	-
SLRCX60/50TR1*	100	600/500	30,94	35,93	-	-

Incrocio piano a traversino

4-way piece



Codice Code	H mm	B mm	Prezzo pz./Price pcs.			
			Z	C	I	V
SLINP10TR*	80	100	38,00	43,25	-	-
SLINP15TR*	80	150	40,72	46,16	-	-
SLINP20TR*	80	200	40,72	46,16	-	-
SLINP30TR*	80	300	43,44	49,05	-	-
SLINP40TR*	80	400	47,06	54,28	-	-
SLINP50TR*	80	500	49,78	57,91	-	-
SLINP60TR*	80	600	53,39	62,44	-	-
SLINP101TR*	100	100	41,63	46,16	-	-
SLINP151TR*	100	150	43,44	49,78	-	-
SLINP201TR*	100	200	43,44	49,78	-	-
SLINP301TR*	100	300	45,25	53,39	-	-
SLINP401TR*	100	400	48,87	57,00	-	-
SLINP501TR*	100	500	52,48	60,62	-	-
SLINP601TR*	100	600	56,11	65,15	-	-

Completare il codice sostituendo al simbolo (*) le iniziali indicate di seguito. \ Complete the code by replacing (*) with following letters.

VB BLU \ BLUE RAL 5015

VG GRIGIO \ GREY RAL 7035

V VERNICIATO GRIGIO SU ORDINAZIONE PAINTED GREY ON REQUEST RAL 7032

Z ZINCATI SENDZIMIR SENDZIMIR GALVANIZED

C ZINCATI A CALDO HOT DIP GALVANIZED

I INOX STAINLESS STEEL

Giunto a snodo per canale a traversino

Articulated joint for cable ladder



Codice Code	H mm	B mm	Prezzo pz./Price pcs.			
			Z	C	I	V
SLPDG80SN*	80	50x30	5,76	7,51	-	-
SLPDG100SN*	100	70x50	6,10	8,25	-	-

Giunto per canale a traversino

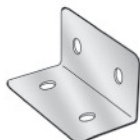
Cable ladder coupling



Codice Code	H mm	B mm	Prezzo pz./Price pcs.			
			Z	C	I	V
SLPDG80TR*	80	80	1,67	2,09	-	-
SLPDG100TR*	100	100	1,81	2,28	-	-

Giunto angolare per canale a traversino

Cable ladder corner joint



Codice Code	H mm	B mm	Prezzo pz./Price pcs.			
			Z	C	I	V
SLPDG80AN*	80	40	1,21	2,09	-	-
SLPDG100AN*	100	40	1,33	2,28	-	-

Completare il codice sostituendo al simbolo (*) le iniziali indicate di seguito. \ Complete the code by replacing (*) with following letters.

VB BLU \ BLUE
RAL 5015

VG GRIGIO \ GREY
RAL 7035

V VERNICIATO GRIGIO SU ORDINAZIONE
PAINTED GREY ON REQUEST
RAL 7032

Z ZINCATI SENDZIMIR
SENDZIMIR GALVANIZED

C ZINCATI A CALDO
HOT DIP GALVANIZED

I INOX
STAINLESS STEEL