



Tris2000®

Canale a battiscopa e cornice 75x25 mm.
Skirting and moulding trunking 75x25 mm.



pagina / page

1.2.4

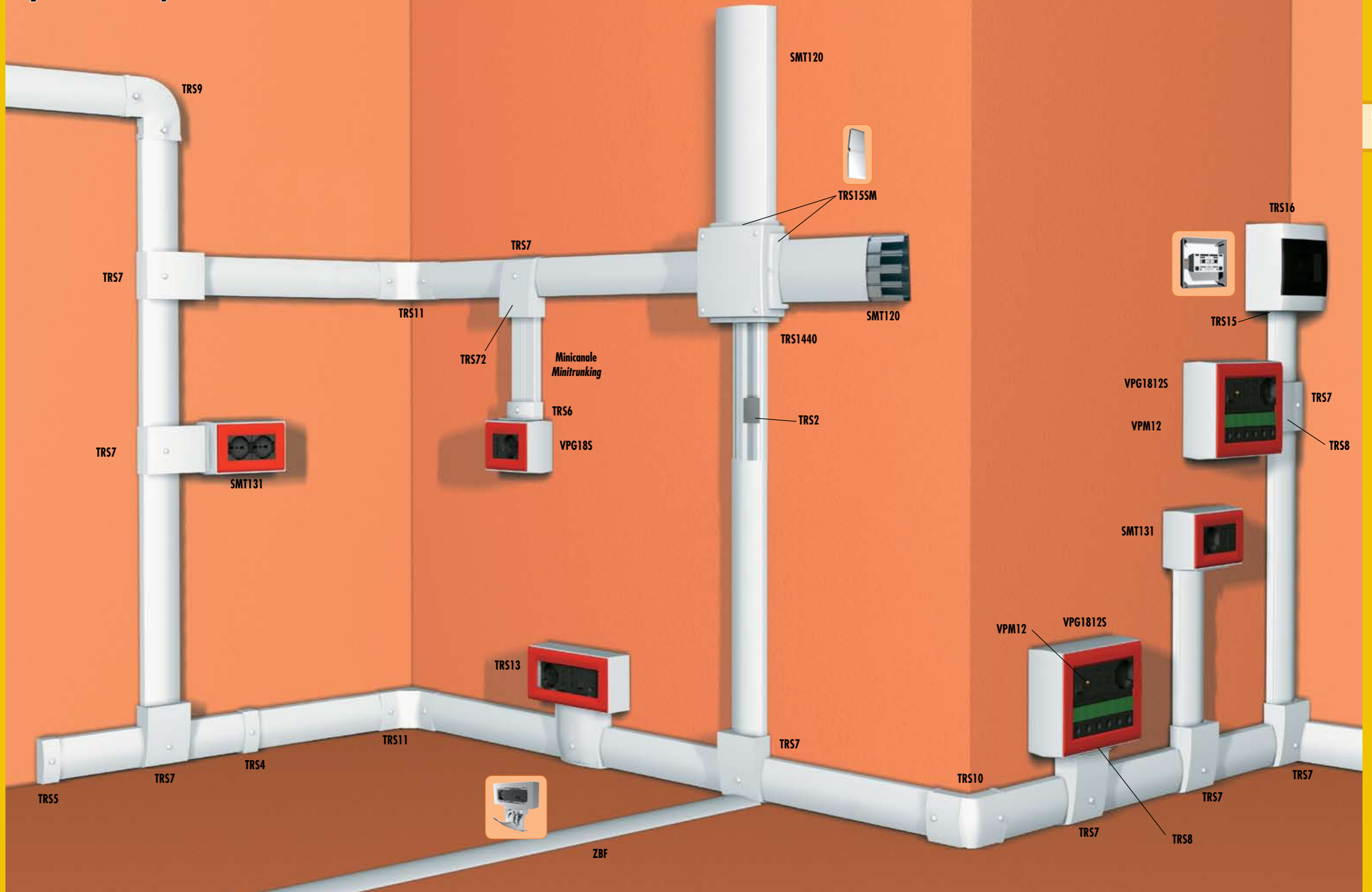
Dati tecnici.
Technical data.



pagina / page

1.2.8

TRIS2000. Elementi del sistema. System components.





Canale a battiscopa e cornice 75x25 mm a 3 vie, con doppi coperchietti di sicurezza.
 Materiale: PVC Rigido Autoestinguente Classe 1 (UL94-VO).
 Skirting and moulding trunking 75x25 mm with 3 ways, with double security covers.
 Material: Self-extinguishing rigid PVC Class 1 (UL94-VO).



Completa compatibilità con SIMMETRIS 2120.
 Compatible with SIMMETRIS 2120.



Canale a battiscopa e cornice 75x25mm.
 Materiale: PVC Rigido Autoestinguente Classe 1 (UL94-VO)
 Lunghezza: 2 metri
 Skirting and moulding trunking 75x25mm.
 Self-extinguishing rigid PVC Class 1 (UL94-VO).
 Length: 2 meters

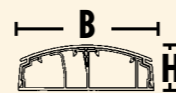


A Norma CEI 23-19
 AMSO
 GWT = T850°

Codifica per l'ordine dei canali
Functional part numbering system

TRS	BE
Tipo	Colore
Type	Colour

- I canali vengono forniti completi di coperchio.
- All trunkings come complete with cover.



COLORE COPERCHIO / COVER COLOUR

- | | | | |
|--|---|--|---|
| | BE = Bianco / White
Type 9010 | | CILS/CS = Ciliegio
Cherry |
| | A = Ardesia / Slate
Type 7021 | | MC = Marmo Carrara
Carrara marble |
| | AL = Alluminio
Aluminium | | MT = Marmo Travertino
Travertino marble |

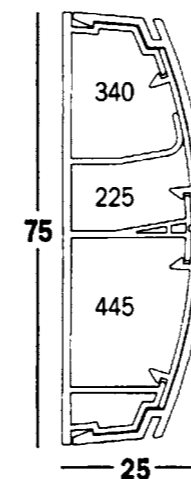
- COLORE CANALE TRUNKING COLOUR**
- | | |
|--|---------------------------------------|
| | G = Grigio / Grey
Type 7030 |
|--|---------------------------------------|

Tipo	Dimensioni BxH mm	Colore	Imballo m	S.G. mm²	Lung. barre m	Cartone peso kg
Part number	Duct Size BxH mm	Colour	Standard Carton m	G.S. mm²	Length m	Carton Weight kg
TRS	75x25	BE	24	1010	2	16
		A				
		AL				
		CILS				
		MC				
		MT				
		MC8	8	1010	2	5,33
		MT8				



CONTENENZA CAVI / WIRE FILL

Sezione mm² Section mm²	Sezione utile e capacità di contenenza cavi H07V - U/R/K Wire fill capacity H07V - U/R/K				
	1,5	2,5	4	6	Ø max
340	23	15	10	7	15
225	16	10	5	3	10
445	34	24	14	10	8



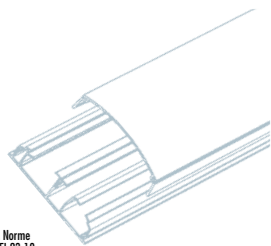
Pellicola protettiva su TRIS 2000.

Una comoda e sottile pellicola aderente protegge il profilo del coperchio dallo sporco causato dal maneggio durante la posa e dalla polvere di cantiere. Sulla stessa sono riportati i codici degli accessori più comuni in caso di riordino, oltre ad alcuni esempi di montaggio più complessi. La pellicola si rimuove facilmente sollevandola dal coperchio ed asportandola a lavori ultimati. Il coperchio risulterà così pulito ed integro.

Protective film on TRIS 2000.

A handy, thin, adhesive film protects the edge of the cover from the dirt caused by handling during mounting and from dust at the site. It is also marked with the part numbers of the most commonly used accessories for reordering, and some more complex examples of assembly. The film is easily removed by lifting it from the cover and removing it when work has been completed. The cover thus stays clean and intact.





A Norme CEI 23-19

AM50

GWT = T850°

TRS2

Coperchi di sicurezza tenuta cavi.
Cable holding safety covers.
Lunghezza/Length: 5 cm
Colore/Colour: Grigio/Grey

Tipo	Colore	Imballo pz.
Part number	Colour	Packing pcs.
TRS2	■	100

TS / TSCP

TS: Tassello ad espansione.
TSCP: Tassello con chiodo a percussione Ø 6 mm.
TS: Wall plug. TSCP: Dowel with nail anchor, Ø 6 mm
Colore/Colour: Nero/Black

Tipo	Colore	Imballo pz.
Part number	Colour	Packing pcs.
TS	■	100
TSCP	■	100

TRS4

Giunto coperchio.
Cover joint.

Tipo	Colore	Imballo pz.
Part number	Colour	Packing pcs.
TRS4	BE - A - AL	15
	CILS - MC - MT	
	MC5 - MT5	

VPM12VIM

Placca portautenze (12 posti)
per scatola VPG1812S, VIMAR IDEA.
Front plate socket panel (12 places)
for VPG1812S box VIMAR IDEA.

Tipo	Colore	Imballo pz.
Part number	Colour	Packing pcs.
VPM12VIM	BE - A - CS	8

VPM12AV

Placca portautenze (12 posti)
per scatola VPG1812S, AVE S45.
Front plate socket panel (12 places)
for VPG1812S box AVE S45.

Tipo	Colore	Imballo pz.
Part number	Colour	Packing pcs.
VPM12AV	BE - A - CS	8

VPM12TIN

Placca portautenze (12 posti) per scatola
VPG1812S, TICINO INTERNATIONAL.
Front plate socket panel (12 places)
for VPG1812S box TICINO INTERNATIONAL.

Tipo	Colore	Imballo pz.
Part number	Colour	Packing pcs.
VPM12TIN	BE - A - CS	8

HGATRJ

Mostrina per 2 connettori femmina RJ45 AT&T.
Si monta su VPM12AV.
Panel for 2 connectors RJ45 AT&T.
Assembly on to VPM12AV.
Colore/Colour: Nero/Black

Tipo	Colore	Imballo pz.
Part number	Colour	Packing pcs.
HGATRJ	■	12

TRS5

Tapppo terminale.
End cap.

Tipo	Colore	Imballo pz.
Part number	Colour	Packing pcs.
TRS5	BE - A - AL	12
	CILS - MC - MT	
	MC6 - MT6	

TRS10

Angolo esterno variabile.
Outer variable bend.

Tipo	Colore	Imballo pz.
Part number	Colour	Packing pcs.
TRS10	BE - A - AL	8
	CILS - MC - MT	
	MC2 - MT2	

TRS11

Angolo interno variabile.
Inner variable bend.

Tipo	Colore	Imballo pz.
Part number	Colour	Packing pcs.
TRS11	BE - A - AL	6
	CILS - MC - MT	
	MC2 - MT2	

TRS9

Curva piana a 90°.
90° degree deviation.

Tipo	Colore	Imballo pz.
Part number	Colour	Packing pcs.
TRS9	BE - A - AL	6
	CILS - MC - MT	
	MC2 - MT2	

TRS8

Raccordo base TRS7 con scatole utenze.
Junction between socket boxes and base TRS7.

Tipo	Colore	Imballo pz.
Part number	Colour	Packing pcs.
TRS8	BE - A - AL	24
	CILS - MC - MT	
	MC4 - MT4	

TRS6

Raccordo tra scatole utenze
e canale a battiscopa TRS o minicanali.
Junction between socket boxes and TRS
skirting board or minitrunking.

Tipo	Colore	Imballo pz.
Part number	Colour	Packing pcs.
TRS6	BE - A	6
	CILS - MC - MT	
	MC2 - MT2	

TRS1440 Pag./Page 2.1.15-4.1.6

Scatola di derivazione. Altezza 40
Junction box. H = 40

Tipo	Colore	Imballo pz.
Part number	Colour	Packing pcs.
TRS1440	BE - A - CS	3

TRS16 Pag./Page 2.1.16 - 4.1.6

Centralino a 7 moduli.
Switchboard at 7 modules.

Tipo	Colore	Imballo pz.
Part number	Colour	Packing pcs.
TRS16	BE - A - AL	3
	CILS	

TRS7

Derivazione a "T", a tre vie
e adattatore per scatole portautenze.
T-junction, three ways derivation and
adaptor for socket boxes.

Tipo	Colore	Imballo pz.
Part number	Colour	Packing pcs.
TRS7	BE - A - AL	4
	CILS - MC - MT	
	MC2 - MT2	

TRS72

Parefina per derivare minicanali da TRS7.
Small wall for junction between TRS7 and
minitrunkings.

Tipo	Colore	Imballo pz.
Part number	Colour	Packing pcs.
TRS72	BE - A - CILS	24

TRS13

Scatola portautenze con interasse 100 (6 posti).
Socket box for switches with centres
of 100 (6 places).

Tipo	Colore	Imballo pz.
Part number	Colour	Packing pcs.
TRS13	BE - A - AL CILS	6

SMT131

Scatola 4 utenze, mod. 504.
Socket box for 4 places, mod. 504.

Tipo	Colore	Imballo pz.
Part number	Colour	Packing pcs.
SMT131	BE - A - AL	9
	CILS - MC - MT	
	MC3 - MT3	

TRS15 Pag./Page 2.1.16 - 4.1.6

Adattatore per scatola TRS1440
e/o centralino TRS16 con battiscopa.
Junction between TRS1440 box
TRS16 switchboard and skirting board.

Tipo	Colore	Imballo pz.
Part number	Colour	Packing pcs.
TRS15	BE - A - AL CILS	20

VPG18S Pag./Page 2.1.17

Scatola portautenze con interasse 83,5 (Mod. 503).
Socket box for switches with centres
of 83,5 (Mod. 503).

Tipo	Colore	Imballo pz.
Part number	Colour	Packing pcs.
VPG18S	BEU - A - AL	9
	CILS - MC - MT	
	MC3 - MT3	

VPGTC4 Pag./Page 2.1.17

Coperchio di chiusura per SMT131
usata come scatola di derivazione.
Closing cover for SMT131 used as junction box.

Tipo	Colore	Imballo pz.
Part number	Colour	Packing pcs.
VPGTC4	BE - A	27
	CILS - MC - MT	
	MC9 - MT9	

VPG1812S

Scatola portautenze
con interasse 164x2 (12 posti).
Socket box for switches with
centres 164x2 (12 places).

Tipo	Colore	Imballo pz.
Part number	Colour	Packing pcs.
VPG1812S	BE - A - CS	4

VPM12GW

Placca portautenze (12 posti)
per scatola VPG1812S GEWISS S20.
Front plate socket panel (12 places)
for VPG1812S box GEWISS S20.

Tipo	Colore	Imballo pz.
Part number	Colour	Packing pcs.
VPM12GW	BE - A - CS	8

VPM12SIM

Placca portautenze (12 posti)
per scatola VPG1812S SIEMENS FUTURA.
Front plate socket panel (12 places)
for VPG1812S box SIEMENS FUTURA.

Tipo	Colore	Imballo pz.
Part number	Colour	Packing pcs.
VPM12SIM	BE - A - CS	8

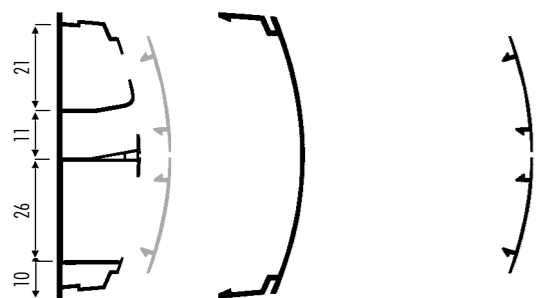
■ BE/BEU = Bianco / White Type 9010 ■ A = Ardesia / Slate Type 7021 ■ AL = Alluminio / Aluminium
■ CILS/CS = Ciliegio / Cherry ■ MC = Marmo Carrara / Carrara marble ■ MT = Marmo Travertino / Travertino marble

Esempi di altre possibili finiture color marmo. Examples of other possible marble colour finishings.

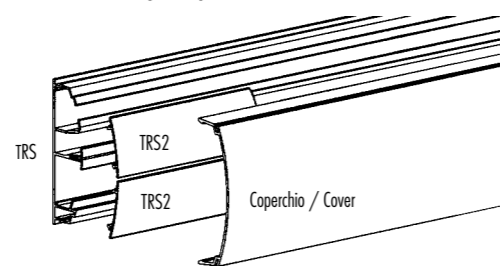


TRS / TRS2

Canale e coperchio. *Skirting board and cover.*
75x25 mm



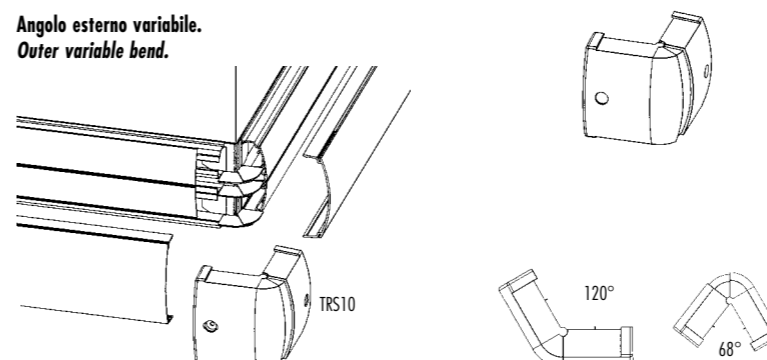
Coperchi di sicurezza tenuta cavi.
Cable holding safety covers.



I coperchi di sicurezza TRS2 trattengono i cavi all'interno dei 3 scomparti e conferiscono più rigidità al canale. Fissare il canale con tasselli (TS) seguendo la disposizione dei fori sul fondo. Lunghezza barre 5 cm.
The snap-on safety covers TRS2 hold cables inside the 3 sections and give more strength to the trunking. Fix the trunking by "TS" wall-plugs according to the holes on the bottom. Length 5 cm.

TRS10

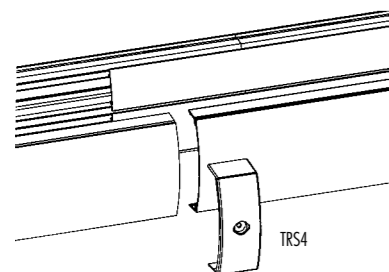
Angolo esterno variabile.
Outer variable bend.



Gli accessori si fissano al canale con le viti in dotazione e i tappini coprivite. Inserire l'accessorio di non promiscuità sul canale e procedere all'installazione.
Fix the accessories to the trunking by the supplied screws and the screw-covering plugs. Insert the no-contact accessory on the trunking and go on with the installation.

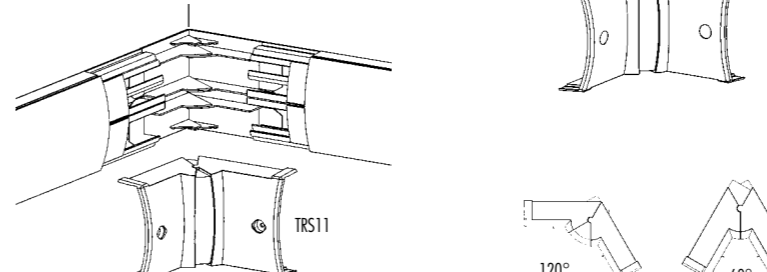
TRS4

Giunto coperchio.
Cover joint.



TRS11

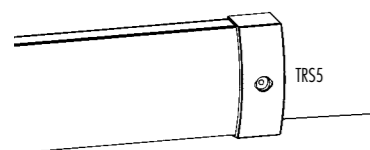
Angolo interno variabile.
Inner variable bend.



Gli accessori si fissano al canale con le viti in dotazione e i tappini coprivite. Inserire l'accessorio di non promiscuità sul canale e procedere all'installazione.
Fix the accessories to the trunking by the supplied screws and the screw-covering plugs. Insert the no-contact accessory on the trunking and go on with the installation.

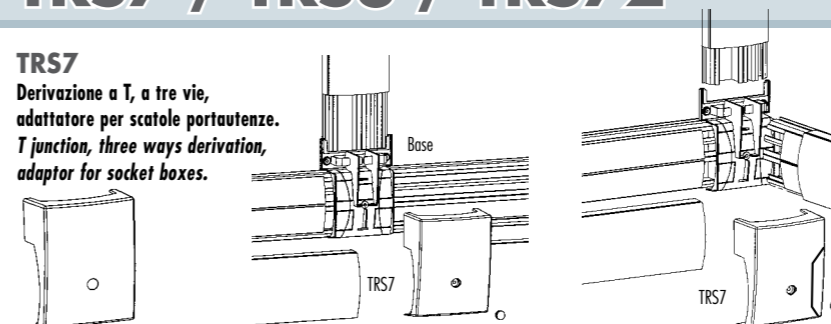
TRS5

Tappo terminale.
End cap.



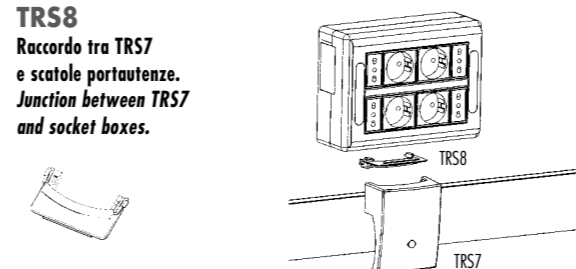
TRS7 / TRS8 / TRS72

TRS7
Derivazione a T, a tre vie, adattatore per scatole portautenze.
T junction, three ways derivation, adaptor for socket boxes.

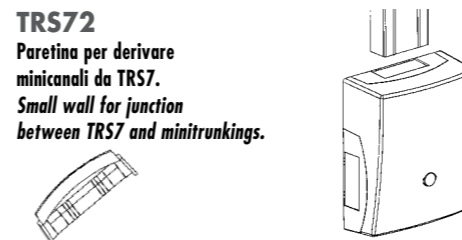


Fissare la base al canale. Eseguire il passaggio dei cavi. Montare la calotta TRS7 fissandola con la vite e tappino coprivite. Nel caso di angolo a 3 vie, fratturare la calotta lungo la parte contrassegnata.
Fix the base to the trunking. Pull the cables through. Mount the cap TRS7 fixing it with the screw and with the screw-covering plug. In the case of a 3-way derivations, break the cap along the score line.

TRS8
Raccordo tra TRS7 e scatole portautenze.
Junction between TRS7 and socket boxes.

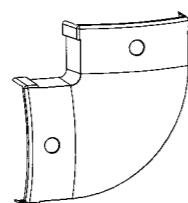
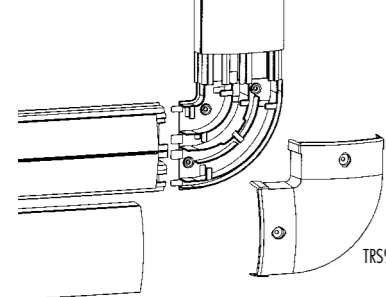


TRS72
Paretina per derivare minicanali da TRS7.
Small wall for junction between TRS7 and minitrunkings.



TRS9

Curva piana a 90°.
90° degree deviation.

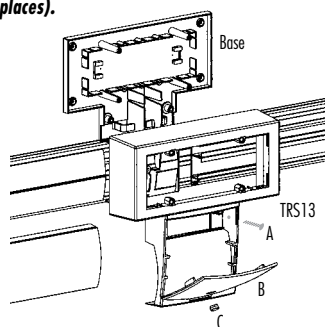
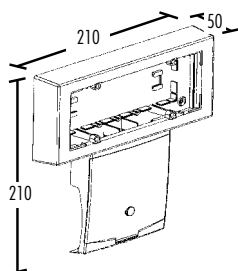


Gli accessori si fissano al canale con le viti in dotazione e i tappini coprivite. Inserire l'accessorio di non promiscuità sul canale e procedere all'installazione.
Fix the accessories to the trunking by the supplied screws and the screw-covering plugs. Insert the no-contact accessory on the trunking and go on with the installation.

Dati tecnici. Technical data.

TRS13

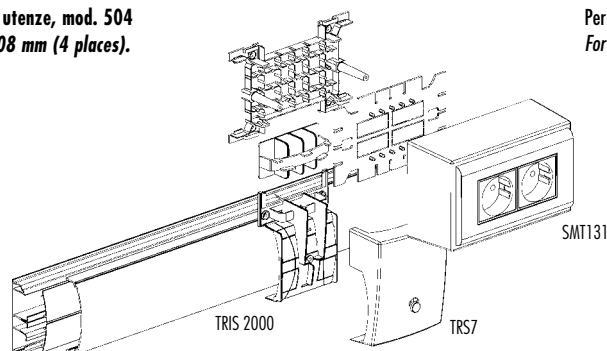
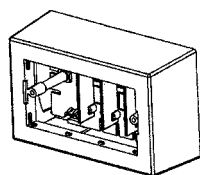
Scatola portautenze con interasse 100 mm (6 posti).
Socket box for switches with interaxis 100 mm (6 places).



Fissare la parete con tasselli. Montare la calotta TRS13 fissandola con le viti (A) alla base. Ruotare o togliere lo sportello rotante (B) e procedere al cablaggio delle utenze. Chiudere e fissare lo sportello con la vite in dotazione. Coprire la vite col tappino coprivite (C).
Fratturare lungo le linee contrassegnate per il passaggio del canale corrispondente.
Fix the wall with wedges. Mount the cap TRS13 fixing it with the screw (A) to the base. Rotate or remove the rotating counter (B) and proceed to the wiring of the uses. Close and fix the counter with the given screw. Cover the screw with its cover (C).
Break along the score line for the entrance of the corresponding trunking.

SMT131

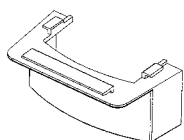
Scatola portautenze con interasse 108, 4 utenze, mod. 504
Socket box for switches with interaxis 108 mm (4 places).



Per ulteriori indicazioni tecniche vedi pag. 1.3.8
For more information see page 1.3.8

TRS6

Raccordo tra scatole portautenze e canale TRS o minicanali.
Junction between socket boxes and TRS skirting board or minitrunkings.

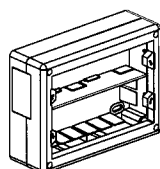


Inserire l'accessorio sul canale togliendo la paretina mobile.
Agganciare la scatola al raccordo e fissarla a parete con tasselli.
Insert the accessory on the trunking breaking along the score line.
Hook the box to the link and fix it to the wall with plugs.

Accessori per scatole portautenze / Accessories for socket box

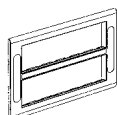
VPG1812S

Interasse 164 mm x 2
12 posti - 202x150x63 mm
Interaxis 164 mm x 2
12 posti - 202x150x63 mm



VPM12

Placca porta utenze.
(12 posti) 190x140 mm
Front plate socket panel.
(12 places) 190x140 mm



HGATRJ

Mostrina femmina per 2
connettori RJ45. Si usa solo
con mostrine AVE VPM12AV.
Female plate for 2 connectors
RJ45. Use only with front plate
AVE VPM12AV.



Raccordi TRS7 e TRS8 TRS7 and TRS8 junctions

Fratturare le lamelle per il passaggio
dei cavi dove necessario.
Break along fracture line where required.

